



**REGIONAL SPECIALISED METEOROLOGICAL CENTRE-TROPICAL CYCLONES, NEW DELHI
TROPICAL WEATHER OUTLOOK**

DEMS-RSMC SPECIAL TROPICAL CYCLONES NEW DELHI DATED 23.11.2021

TROPICAL WEATHER OUTLOOK FOR NORTH INDIAN OCEAN (THE BAY OF BENGAL AND ARABIAN SEA) VALID FOR NEXT 120 HOURS ISSUED AT 0600 UTC OF 23.11.2021 BASED ON 0300 UTC OF 23.11.2021.

BAY OF BENGAL:

YESTERDAY'S CYCLONIC CIRCULATION OVER SOUTHEAST BAY OF BENGAL (BOB) AND NEIGHBOURHOOD LAY OVER CENTRAL PARTS OF SOUTH BOB AT 0300 UTC OF TODAY, THE 23RD NOVEMBER, 2021. UNDER ITS INFLUENCE, A LOW PRESSURE AREA IS LIKELY TO FORM OVER SOUTHWEST BOB DURING NEXT 24 HOURS. IT IS LIKELY TO MOVE WEST-NORTHWESTWARDS TOWARDS SRI LANKA & SOUTH TAMILNADU COAST.

SCATTERED TO BROKEN LOW AND MEDIUM CLOUDS WITH EMBEDDED MODERATE TO INTENSE CONVECTION LAY OVER ANDAMAN SEA AND TENASERIM COAST. CONVECTION HAS SLIGHTLY DECREASED OVER THE SOUTHWEST BOB & NEIGHBOURHOOD DURING LAST 06 HOURS.

PROBABILITY OF CYCLOGENESIS (FORMATION OF DEPRESSION) DURING NEXT 120 HRS:

24 HOURS	24-48 HOURS	48-72 HOURS	72-96 HOURS	96-120 HOURS
NIL	NIL	NIL	NIL	NIL

ARABIAN SEA:

SUB: WELL MARKED LOW PRESSURE AREA OVER EASTCENTRAL ARABIAN SEA

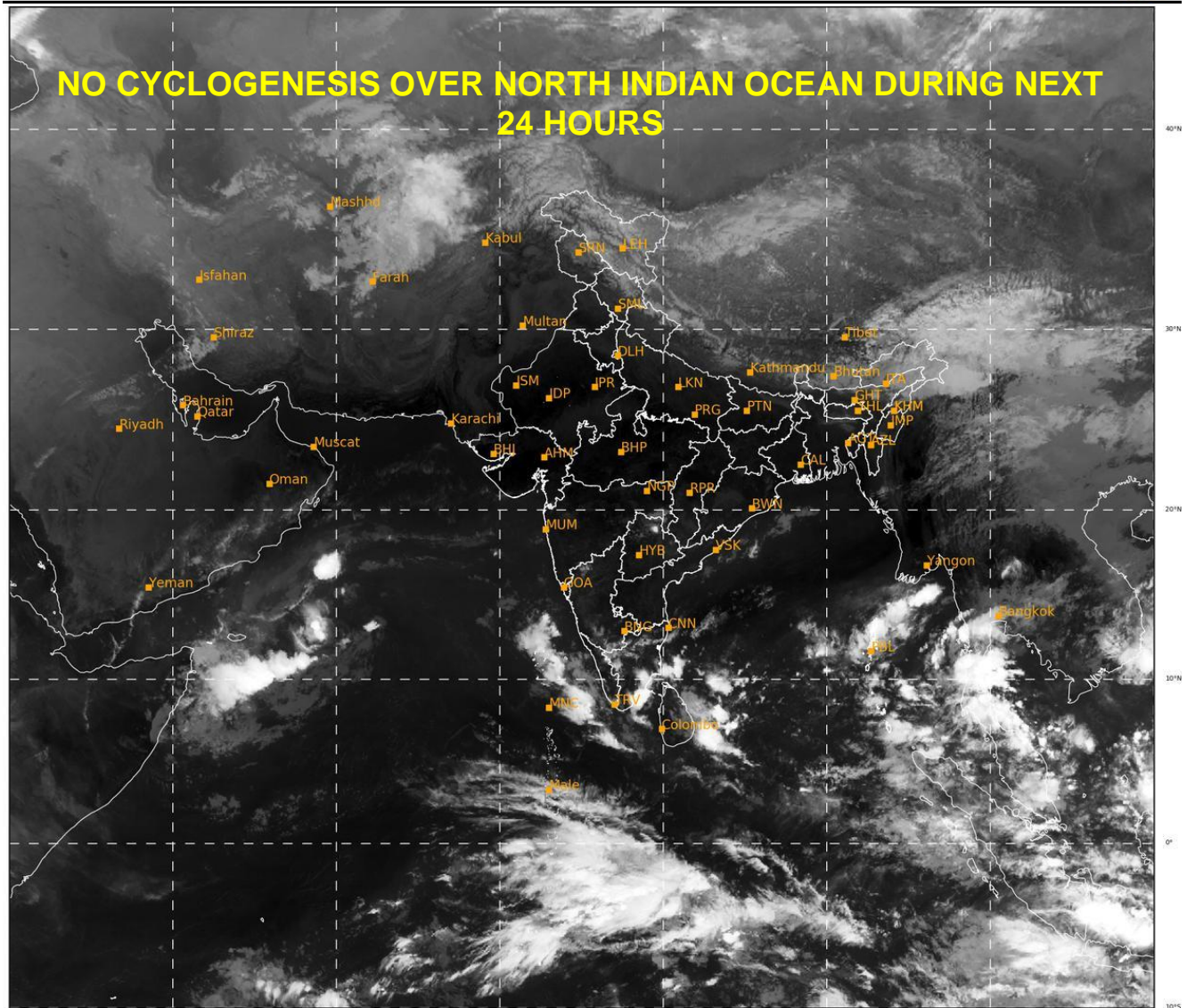
THE WELL MARKED LOW PRESSURE AREA OVER WESTCENTRAL AND ADJOINING SOUTHWEST ARABIAN SEA WEAKENED INTO A LOW PRESSURE AREA OVER SOUTHWEST AND ADJOINING WESTCENTRAL ARABIAN SEA AT 0000 UTC AND BECAME LESS MARKED AT 0300 UTC OF TODAY, THE 23RD NOVEMBER, 2021.

AS PER SATELLITE IMAGERY AT 0300 UTC, SCATTERED LOW AND MEDIUM CLOUDS WITH EMBEDDED MODERATE TO INTENSE CONVECTION LAY OVER SOUTHWEST AND ADJOINING WESTCENTRAL ARABIAN SEA BETWEEN LATITUDE 9.0N & 14.5N AND LONGITUDE 59.5E & 61.0E. MINIMUM CLOUD TOP TEMPERATURE (CTT) IS MINUS 93⁰C. SCATTERED LOW AND MEDIUM CLOUDS WITH EMBEDDED INTENSE TO VERY INTENSE CONVECTION LAY OVER KARNATAKA-KERALA COASTS.

PROBABILITY OF CYCLOGENESIS (FORMATION OF DEPRESSION) DURING NEXT 120 HRS:

24 HOURS	24-48 HOURS	48-72 HOURS	72-96 HOURS	96-120 HOURS
NIL	NIL	NIL	NIL	NIL

REMARKS:



468

938

IMD, DELHI